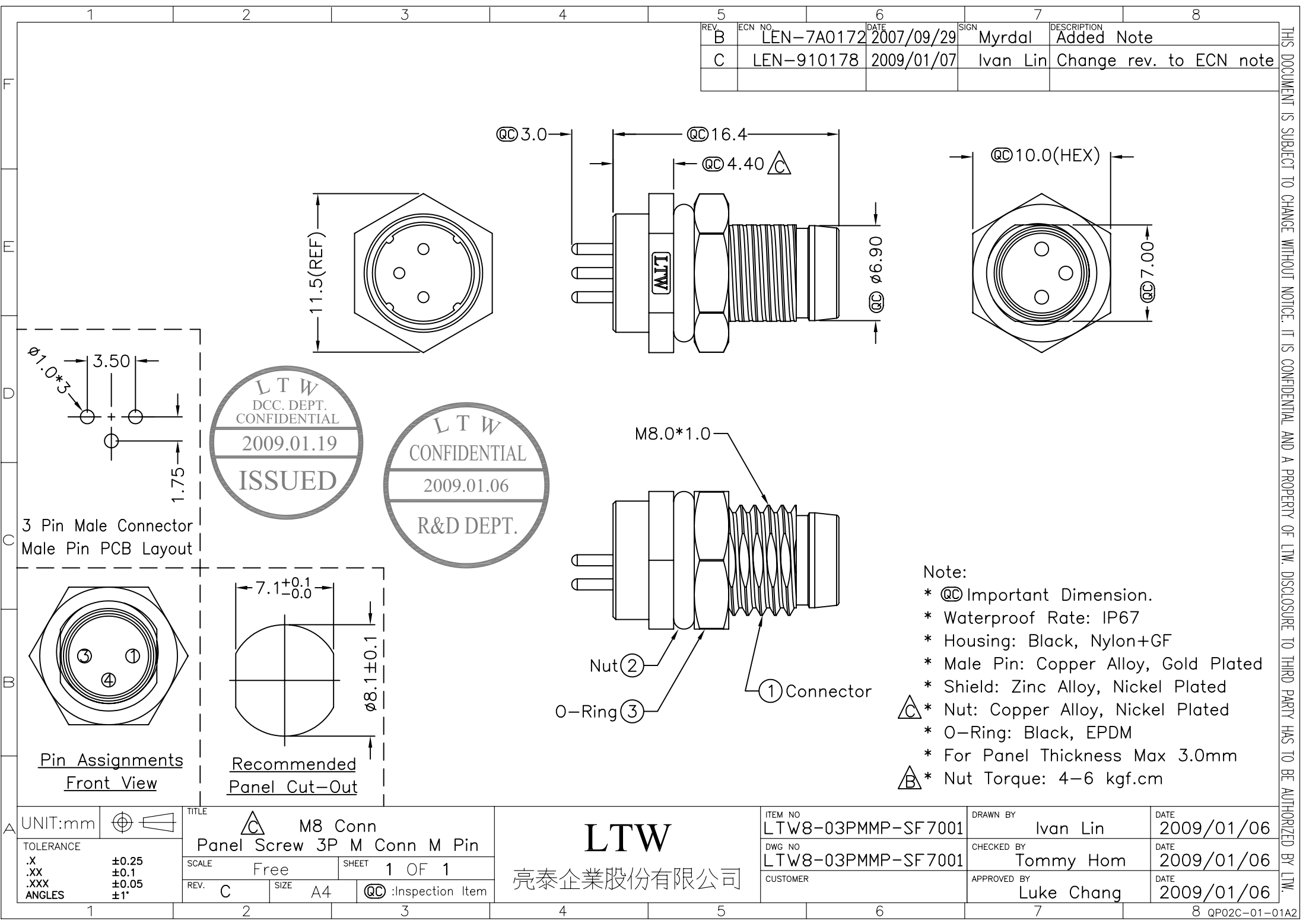




EN: This Datasheet is presented by the manufacturer.

Please visit our website for pricing and availability at www.hestore.hu.



REV.	ECN NO.	DATE	SIGN	DESCRIPTION
B	LEN-7A0172	2007/09/29	Myrdal	Added Note
C	LEN-910178	2009/01/07	Ivan Lin	Change rev. to ECN note

F
E
D
C
B
A

THIS DOCUMENT IS SUBJECT TO CHANGE WITHOUT NOTICE. IT IS CONFIDENTIAL AND A PROPERTY OF LTW. DISCLOSURE TO THIRD PARTY HAS TO BE AUTHORIZED BY LTW.

UNIT:mm		TITLE M8 Conn Panel Screw 3P M Conn M Pin		ITEM NO LTW8-03PMMP-SF7001		DRAWN BY Ivan Lin		DATE 2009/01/06	
TOLERANCE .X ±0.25 .XX ±0.1 .XXX ±0.05 ANGLES ±1°		SCALE Free		DWG NO LTW8-03PMMP-SF7001		CHECKED BY Tommy Hom		DATE 2009/01/06	
REV. C		SIZE A4		CUSTOMER		APPROVED BY Luke Chang		DATE 2009/01/06	
SHEET 1 OF 1		QC :Inspection Item							

LTW
亮泰企業股份有限公司

Note:
* @C Important Dimension.
* Waterproof Rate: IP67
* Housing: Black, Nylon+GF
* Male Pin: Copper Alloy, Gold Plated
* Shield: Zinc Alloy, Nickel Plated
* Nut: Copper Alloy, Nickel Plated
* O-Ring: Black, EPDM
* For Panel Thickness Max 3.0mm
* Nut Torque: 4-6 kgf.cm