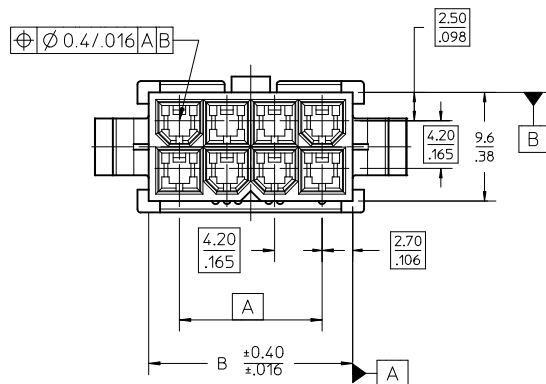
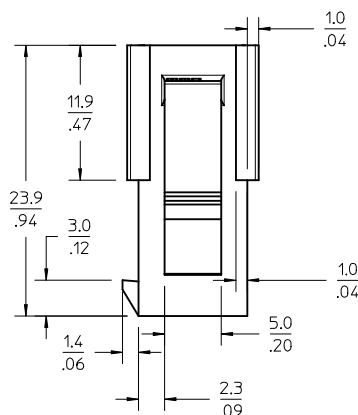
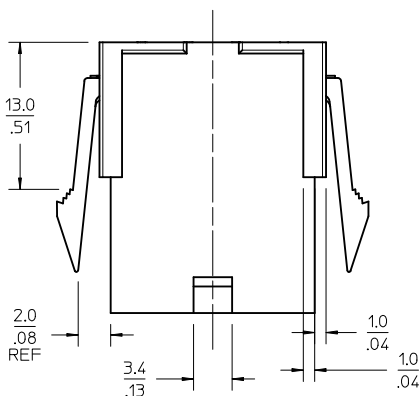
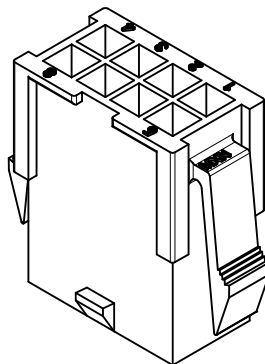
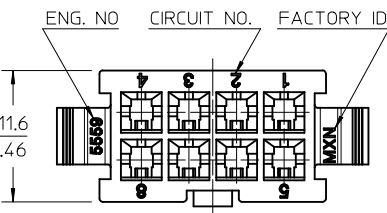




**EN:** This Datasheet is presented by the manufacturer.

Please visit our website for pricing and availability at [www.hestore.hu](http://www.hestore.hu).



# NOTES:

## 1) MATERIAL:

"BLANK" = NYLON 6/6, 94V-2, COLOR: NATURAL.

"BL" = NYLON 6/6, 94V-2, COLOR: BLACK.

"BU" = NYLON 6/6, 94V-2, COLOR: BLUE.

"RE" = NYLON 6/6, 94V-2, COLOR: RED.

"210" = NYLON 6/6, 94V-0, COLOR: NATURAL.

## 2) FINISH: NOT APPLICABLE

## 3) PRODUCT SPECIFICATION: PS-5556-001

## 4) PACKAGING: BULK

## 5) PART MATES WITH MOLEX RECEPTACLE #5557.

## 6) PART TO BE USED WITH MOLEX MALE TERMINAL #5558.

## 7) PART IS NOT DESIGNED FOR CURRENT SHARING.

## 8) CONNECTORS ARE NOT TO BE MATED OR UNMATED WHILE CIRCUITS ARE LIVE.

## 9) WIRES ARE TO BE DRESSED IN SUCH A MANNER TO ALLOW THE TERMINALS

TO FLOAT FREELY IN THE POCKET.

## 10) PART CONFORMS TO CLASS "B" REQUIREMENTS OF COSMETIC SPECIFICATION

PS-45499-002 WITH THE EXCEPTION OF DISCOLORATION, FLASH AND SINK MEET

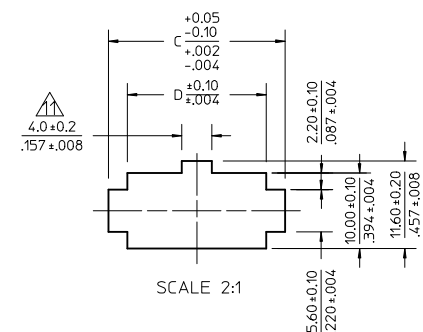
CLASS "C" REQUIREMENTS.

ON 2 CIRCUITS PARTS THIS DIMENSION IS ALLOWABLE UP TO "D" DIMENSION.

PANEL HOLE TO BE PUNCHED OUT IN THE SAME DIRECTION AS INSERTION INTO THE PANEL.





# LEGEND

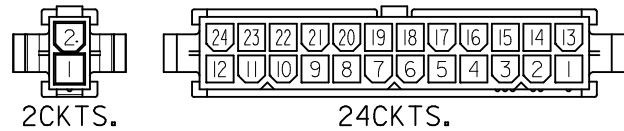
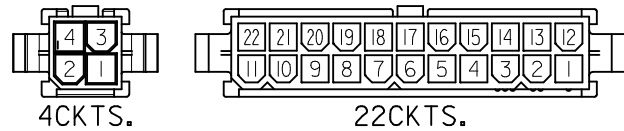
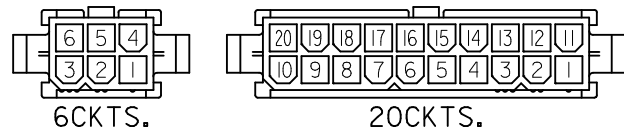
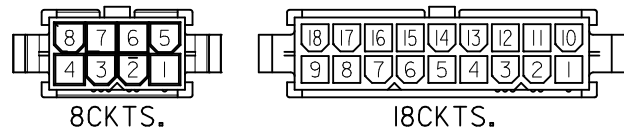
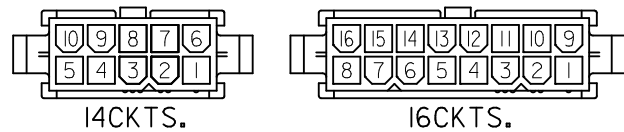
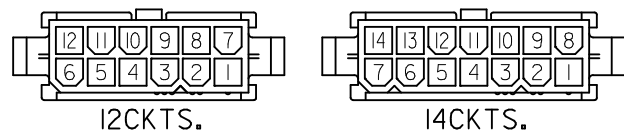
BASE NO 5559-\*\* P - \*  
CIRCUIT SIZE 02-24)  
HOUSING TYPE: PLUG WITH MOUNTING EARS  
MATERIAL OPTION: (SEE NOTE 1)



RECOMMENDED PANEL HOLE DIMENSIONS  
(THICKNESS : 0.8-2.0/.032-.079)

52.1/2.051	57.0/2.244	51.6/2.031	46.2/1.819	24
47.9/1.886	52.8/2.079	47.4/1.866	42.0/1.654	22
43.7/1.720	48.6/1.913	43.2/1.701	37.8/1.488	20
39.5/1.555	44.4/1.748	39.0/1.535	33.6/1.323	18
35.3/1.390	40.2/1.583	34.8/1.370	29.4/1.158	16
31.1/1.224	36.0/1.417	30.6/1.205	25.2/9.92	14
26.8/1.055	31.8/1.252	26.4/1.039	21.0/8.27	12
22.6/8.90	27.6/1.087	22.2/8.74	16.8/6.61	10
18.4/7.24	23.4/9.21	18.0/7.09	12.6/4.96	8
14.2/5.59	19.2/7.56	13.8/5.43	8.4/3.31	6
10.0/3.94	15.0/5.91	9.6/3.78	4.2/1.65	4
5.8/2.28	10.8/4.25	5.4/2.13	—	2
D	C	B	A	CIRCUIT

REMOVED -04P-RE EC NO: UCP2010-2477 DRAWN: JAGUILAR 2010/04/09 CHKD: JIBELL 2010/08/26 APPR: FSMITH 2010/08/27	DESCRIPTION REV	QUALITY SYMBOLS <div></div> <div></div> <div></div>	GENERAL TOLERANCES (UNLESS SPECIFIED)				DIMENSION STYLE MM/IN		SCALE 3:1	DESIGN UNITS METRIC		THIRD ANGLE PROJECTION		
			4 PLACES		± ---	± ---	DRAWN BY H. HIRAMOTO	DATE 1988/10/14	NEW MINI. FIT CONNECTOR CRIMP PIN HOUSING					
			3 PLACES		± ---	± .012	CHECKED BY Y. YAMADA	DATE 1988/10/21						
			2 PLACES		± .30	± .016	APPROVED BY M. ENOMOTO	DATE 1988/10/24						
			1 PLACE		± .40	± ---	MATERIAL NO.							
			ANGULAR ± 3 °				DRAFT WHERE APPLICABLE MUST REMAIN WITHIN DIMENSIONS		SEE CHART		DOCUMENT NO. SD-5559-NP		SHEET NO. 1 OF 2	
			THIS DRAWING CONTAINS INFORMATION THAT IS PROPRIETARY TO MOLEX INCORPORATED AND SHOULD NOT BE USED WITHOUT WRITTEN PERMISSION											



CIRCUIT SIZE LAYOUT (SCALE : 2-1)

V-2 BLACK		
		24
		22
		20
		18
		16
		14
		12
		10
		8
39-02-8065	5569-06P-BL	6
39-02-8045	5569-04P-BL	4
		2
EDP NO.	ENG. NO.	CIRCUIT

V-2 BLUE			V-2 RED			V-0 NATURAL			V-2 NATURAL		
		24			24	39-01-2246	5559-24P-210	24	39-01-2241	5559-24P	24
		22			22	↑ -2226	↑ -22P-210	22	↑ -2221	↑ -22P	22
		20			20	↑ -2206	↑ -20P-210	20	↑ -2201	↑ -20P	20
		18			18	↑ -2186	↑ -18P-210	18	↑ -2181	↑ -18P	18
		16			16	↑ -2166	↑ -16P-210	16	↑ -2161	↑ -16P	16
		14			14	↑ -2146	↑ -14P-210	14	↑ -2141	↑ -14P	14
		12			12	↑ -2126	↑ -12P-210	12	↑ -2121	↑ -12P	12
		10			10	↑ -2106	↑ -10P-210	10	↑ -2101	↑ -10P	10
		8			8	↑ -2086	↑ -08P-210	8	↑ -2081	↑ -08P	8
		6	39-02-8067	5559-06P-RE	6	↑ -2066	↑ -06P-210	6	↑ -2061	↑ -06P	6
		4	↑ -2046	↑ -04P-210	4	↑ -2046	↑ -04P-210	4	↑ -2041	↑ -04P	4
		2	↑ -2026	↑ -02P-210	2	↑ -2026	↑ -02P-210	2	↑ -2021	↑ -02P	2
EDP NO.	ENG. NO.	CIRCUIT	EDP NO.	ENG. NO.	CIRCUIT	EDP NO.	ENG. NO.	CIRCUIT	EDP NO.	ENG. NO.	CIRCUIT

SEE SHEET 1 EC NO: UCP2010-2477 DRWN: JAGUILAR 2010/04/09 CHKD: J.BELL 2010/08/26 APPR: FSM/TH 2010/08/27	QUALITY SYMBOLS	DESCRIPTION	GENERAL TOLERANCES (UNLESS SPECIFIED)		DIMENSION STYLE		SCALE	DESIGN UNITS	THIRD ANGLE PROJECTION		
					MM/IN		2:1	METRIC	⊙ □		
					DRAWN BY DATE		TITLE				
			4 PLACES ± --- ± ---		H. HIRAMOTO 1988/10/14		NEW MINI. FIT CONNECTOR				
			3 PLACES ± --- ± .012		CHECKED BY DATE		CRIMP PIN HOUSING				
			2 PLACES ± .30 ± .016		Y. YAMADA 1988/10/21						
			1 PLACE ± .40 ± ---		APPROVED BY DATE						
			ANGULAR ± 3 °		M. ENOMOTO 1988/10/24		MOLEX MOLEX INCORPORATED				
					MATERIAL NO.		DOCUMENT NO.		SHEET NO.		
			DRAFT WHERE APPLICABLE MUST REMAIN WITHIN DIMENSIONS		SEE CHART		SD-5559-NP		2 OF 2		
J1	REV		SIZE C	THIS DRAWING CONTAINS INFORMATION THAT IS PROPRIETARY TO MOLEX INCORPORATED AND SHOULD NOT BE USED WITHOUT WRITTEN PERMISSION							