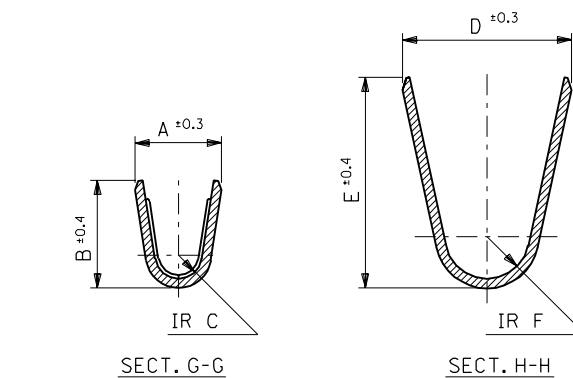
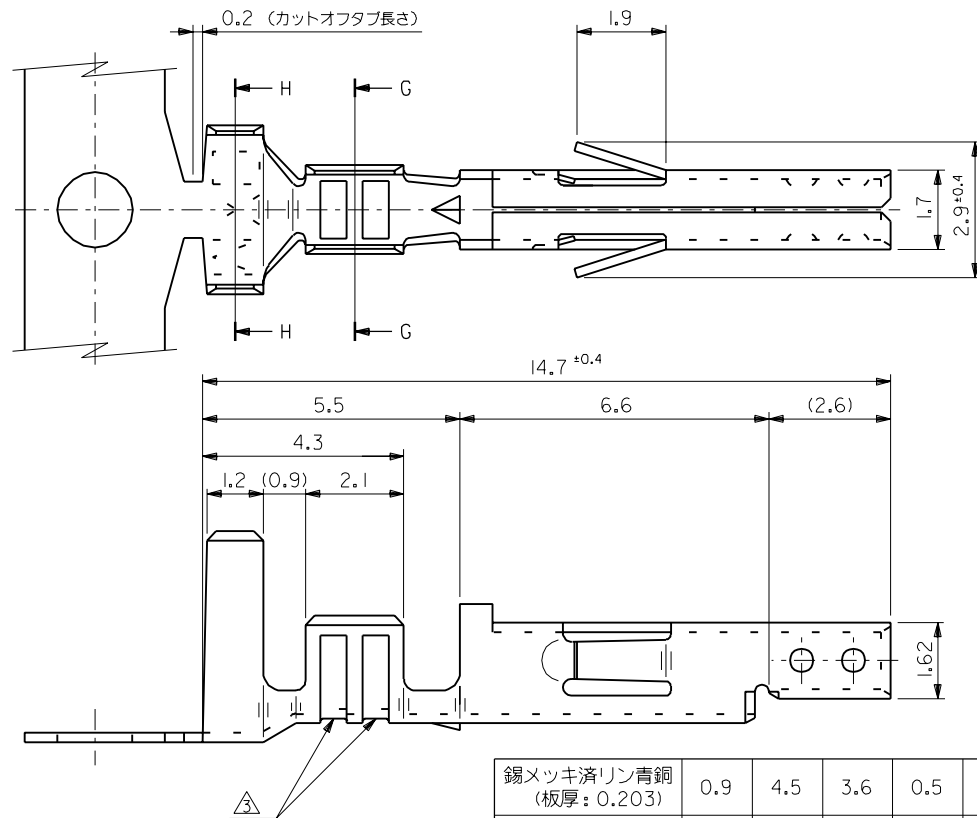




EN: This Datasheet is presented by the manufacturer.

Please visit our website for pricing and availability at www.hestore.hu.

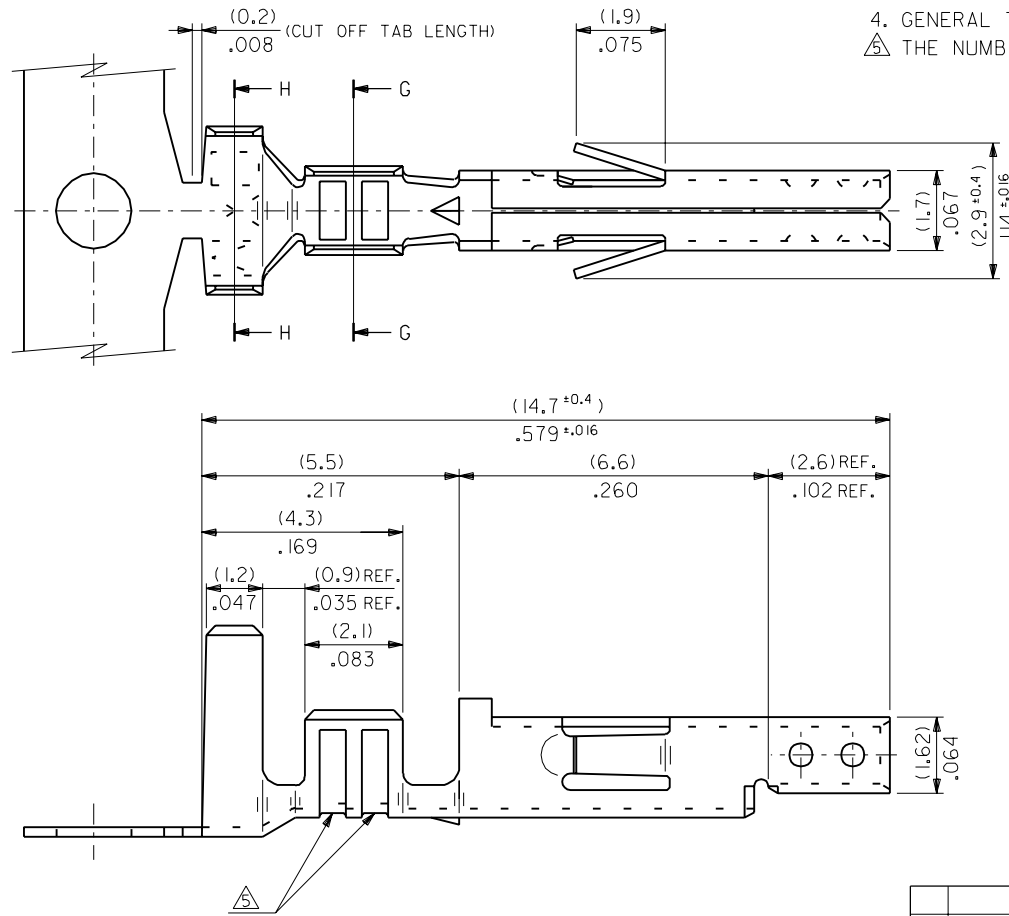


注記

- 適合ハウジング : 5557 シリーズ
- 嵌合相手 : 5558, 5566, 5569 シリーズ
- 適用電線が #22-28 の製品のセレーション数は 1 とする。

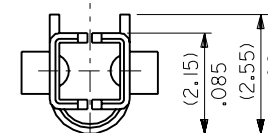
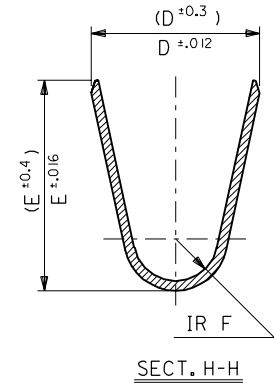
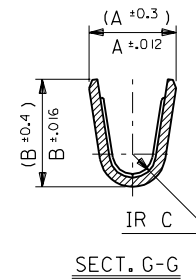
錫メッキ済リン青銅 (板厚: 0.203)	0.9	4.5	3.6	0.5	2.3	1.9	∅ 1.3-3.1	#18-24	39-00-0060	5556 PBTL	バラ状
									↑ -0059	↑ PBT	連鎖状
									↑ -0047	↑ T2L	バラ状
									↓ -0046	↓ T2	連鎖状
									↓ -0039	↓ TL	バラ状
									39-00-0038	5556 T	連鎖状
錫メッキ済黄銅 (板厚: 0.203)	0.6	2.3	2.3	0.4	1.65	1.8	∅ 0.9-1.8	#22-28			
	0.9	4.5	3.6	0.5	2.3	1.9	∅ 1.3-3.1	#18-24			
材料	F	E	D	C	B	A	被覆外径	適用電線	EDP NO.	ENG. NO.	端子形状

材料 MATERIAL				表参照				molex MOLEX-JAPAN CO.,LTD. 日本モレックス株式会社			
仕上げ FINISH				—H—				EDP NO. 39-00-00**			
適用電線範囲 WIRE RANGE				表参照				ENG. NO. SD-5556****			
被覆外径 INS. RANGE				表参照				REV G			
DRAWN BY '91/5/18 H.HIRAMOTO				CHK'D BY '98/11/9 K.T. S.KUNISHI				TITLE 名称 NEW MINI.FIT CONN. CRIMP RECEPTACLE			
APP'D BY '98/11/9 M.FUKUSHIMA				尺 度 SCALE 10 - 1							
角 度 ANGLE ±3°				F 変更 (JC90279) Y.K. '98/11/6 S.K.							
30 以上 OVER ±0.3				E 変更 (JC90012) Y.K. '98/7/6 S.K.							
10 以上 30 未満 OVER UNDER ±0.25				D 変更 & 再作図 (J10380) H.H. '98/5/21 S.K.							
10 未満 UNDER ±0.2				記号 LTR 変更内容 REVISION RECORD DR. CHK. 日付 DATE							
一般公差 GENERAL TOLERANCES				REVISE ONLY ON CAD SYSTEM							



NOTES

1. APPLICABLE HOUSING : 5557 SERIES.
 2. MATES WITH TERMINAL : 5558, 5566, 5569 SERIES.
 3. (METRIC) VALUES SHOWN GOVERN OVER ENGLISH CONVERSION VALUES.
 4. GENERAL TOLERANCES OF ENGLISH CONVERSION VALUES : ±.008 INCH.
- △ THE NUMBER OF SERRATIONS TO BE ONE FOR WIRE RANGE #22-28.



材料 MATERIAL		SEE SHEET 2 OF 2	moLEX MOLEX-JAPAN CO.,LTD. 日本モレックス株式会社	
仕上げ FINISH		SEE SHEET 2 OF 2	EDP. NO. SEE SHEET 2 OF 2	
適用電線範囲 WIRE RANGE		SEE SHEET 2 OF 2	ENG. NO. SHEET 1 OF 2 REV J	
被覆外径 INS. RANGE		SEE SHEET 2 OF 2	SD-5556*****	
DRAWN BY 9/5/18 H.HIRAMOTO		CHK'D BY 98/11/9 K.T. S.KUNISHI	TITLE 名称 NEW MINI. FIT CONN. CRIMP RECEPTACLE	
APP'D BY 98/11/9 M.FUKUSHIMA		SCALE 10 - 1		
角度 ANGLE	±3°	J REVISED (JC90279) Y.K. S.K. 98/11/6		
30 以上 OVER	±0.3	H REVISED (JC90012) Y.K. S.K. 98/7/6		
10 以上 30 未満 UNDER	±0.25	G REVISED (JC80619) Y.K. S.K. 98/5/6		
10 未満 UNDER	±0.2	F REVISED & REDRAWN (J10381) H.H. 9/16/25		
一般公差 GENERAL TOLERANCES		記号 LTR 変更内容 REVISION RECORD DR. CHK. DATE		

THIS DRAWING CONTAINS INFORMATION THAT IS PROPRIETARY TO MOLEX(JAPAN) AND SHOULD NOT BE USED WITHOUT WRITTEN PERMISSION
本図面は日本モレックス（株）の所有する情報を含むもので 当社の許可なく複製を禁止する。

MXJ-8

8

7

6

5


4

3

2

1

TIN OVER NICKEL PLATED PHOSPHOR BRONZE	(0.9) .035	(4.5) .177	(3.6) .142	(0.6) .024	(2.7) .106	(2.3) .091	∅ (3.1) .122 MAX.	# 16	39-00-0119	5556 PBS3L	LOOSE
	(0.6) .024	(2.3) .091	(2.3) .091	(0.4) .016	(1.65) .065	(1.8) .071	∅ (0.9-1.8) .035-.071	#22-28	↑ -0118	↑ PBS3	CHAIN
	(0.9) .035	(4.5) .177	(3.6) .142	(0.5) .020	(2.3) .091	(1.9) .075	∅ (1.3-3.1) .051-.122	# 18-24	-0117	PBS2L	LOOSE
									-0116	PBS2	CHAIN
TIN PLATED PHOSPHOR BRONZE	(0.9) .035	(4.5) .177	(3.6) .142	(0.6) .024	(2.7) .106	(2.3) .091	∅ (3.1) .122 MAX.	# 16	-0115	PBSL	LOOSE
	(0.6) .024	(2.3) .091	(2.3) .091	(0.4) .016	(1.65) .065	(1.8) .071	∅ (0.9-1.8) .035-.071	#22-28	-0114	PBS	CHAIN
	(0.9) .035	(4.5) .177	(3.6) .142	(0.5) .020	(2.3) .091	(1.9) .075	∅ (1.3-3.1) .051-.122	# 18-24	-0080	PBT3L	LOOSE
									-0079	PBT3	CHAIN
TIN OVER NICKEL PLATED BRASS	(0.9) .035	(4.5) .177	(3.6) .142	(0.6) .024	(2.7) .106	(2.3) .091	∅ (3.1) .122 MAX.	# 16	-0066	PBT2L	LOOSE
	(0.6) .024	(2.3) .091	(2.3) .091	(0.4) .016	(1.65) .065	(1.8) .071	∅ (0.9-1.8) .035-.071	#22-28	-0065	PBT2	CHAIN
	(0.9) .035	(4.5) .177	(3.6) .142	(0.5) .020	(2.3) .091	(1.9) .075	∅ (1.3-3.1) .051-.122	# 18-24	-0060	PBTL	LOOSE
									-0059	PBT	CHAIN
TIN OVER COPPER PLATED BRASS	(0.9) .035	(4.5) .177	(3.6) .142	(0.6) .024	(2.7) .106	(2.3) .091	∅ (3.1) .122 MAX.	# 16	-0113	S3L	LOOSE
	(0.6) .024	(2.3) .091	(2.3) .091	(0.4) .016	(1.65) .065	(1.8) .071	∅ (0.9-1.8) .035-.071	#22-28	-0112	S3	CHAIN
	(0.9) .035	(4.5) .177	(3.6) .142	(0.5) .020	(2.3) .091	(1.9) .075	∅ (1.3-3.1) .051-.122	# 18-24	-0111	S2L	LOOSE
									-0110	S2	CHAIN
MATERIAL	(0.9) .035	(4.5) .177	(3.6) .142	(0.6) .024	(2.7) .106	(2.3) .091	∅ (3.1) .122 MAX.	# 16	-0109	SL	LOOSE
	(0.6) .024	(2.3) .091	(2.3) .091	(0.4) .016	(1.65) .065	(1.8) .071	∅ (0.9-1.8) .035-.071	#22-28	-0108	S	CHAIN
	(0.9) .035	(4.5) .177	(3.6) .142	(0.5) .020	(2.3) .091	(1.9) .075	∅ (1.3-3.1) .051-.122	# 18-24	-0078	T3L	LOOSE
									-0077	T3	CHAIN
MATERIAL	(0.6) .024	(2.3) .091	(2.3) .091	(0.4) .016	(1.65) .065	(1.8) .071	∅ (0.9-1.8) .035-.071	#22-28	-0047	T2L	LOOSE
	(0.9) .035	(4.5) .177	(3.6) .142	(0.5) .020	(2.3) .091	(1.9) .075	∅ (1.3-3.1) .051-.122	# 18-24	-0046	T2	CHAIN
									↓ -0039	↓ TL	LOOSE
									39-00-0038	5556 T	CHAIN
MATERIAL	F	E	D	C	B	A	INS. RANGE	WIRE RANGE	EDP NO.	ENG. NO.	FORM

						材料 MATERIAL	SEE CHART	 MOLEX-JAPAN CO.,LTD. 日本モレックス株式会社	
						THICKNESS : (0.203)/.008			
		J	SEE SHEET 1 OF 2	Y.K. S.K.	'98/11/6	仕上げ FINISH	SEE CHART	EDP. NO.	
						適用電線範囲 WIRE RANGE	SEE CHART	SEE CHART	
角度 ANGLE	+3°	H	SEE SHEET 1 OF 2	Y.K. S.K.	'98/7/6	被覆外径 INS. RANGE	SEE CHART	ENG. NO.	SHEET 2 OF 2
30 以上 OVER	+0.3	G	SEE SHEET 1 OF 2	Y.K. S.K.	'98/5/6			SD-5556****	REV J
10 以上 30 未満 OVER UNDER	+0.25	F	SEE SHEET 1 OF 2	H.H.	'91/6/25				
10 未満 UNDER	+0.2	記号	変更内容	DR.	日付	DRAWN BY '91/5/18 H.HIRAMOTO	CHK'D BY '98/11/9 K.T.S.KUNISHI	TITLE 名称	
一般公差 GENERAL TOLERANCES		REVISION RECORD	CHK.	DATE	APP'D BY '98/11/9 M.FUKUSHIMA	尺 度 SCALE 10 - 1	NEW MINI.FIT CONN. CRIMP RECEPTACLE		
		REVISE ONLY ON CAD SYSTEM							